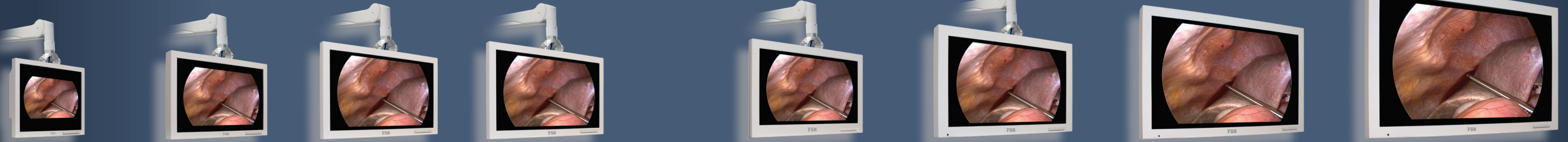


Medical Display Specifications



	FS-L1901D	FS-L2401D	FS-P2601D	FS-P2602D	FS-P2603D	FS-L3201D	FS-L4202D	FS-L5501D	
LCD Panel	Panel Type	19 inch TFT LCD (IPS)	24 inch TFT LCD (IPS)	26 inch TFT LCD (IPS)	26 inch enhanced TFT LCD (IPS)	26 inch TFT LCD (IPS)	32 inch TFT LCD (IPS)	42 inch TFT LCD (IPS)	55 inch TFT LCD (IPS)
	Aspect Ratio	5:4	16:10	16:9	16:9	16:9	16:9	16:9	16:9
	Resolution	1280x1024 (SXGA)	1920x1200 (WUXGA)	1920x1080 (HD 1080)	1920x1080 (HD 1080)	1920x1080 (HD 1080)	1920x1080 (HD 1080)	1920x1080 (HD 1080)	1920x1080 (HD 1080)
	Surface Luminance	270	400	450	500	450	500	500	450
	Contrast Ratio	800 : 1	1000 : 1	1400 : 1	1500 : 1	1400 : 1	1300 : 1	1300 : 1	1300 : 1
	Display Colors	16.7M	1.06 Billion	1.06 Billion	1.06 Billion	1.06 Billion	1.06 Billion	1.06 Billion	1.06 Billion
	Response Time(G-to-G)	9 ms (avg.)	6 ms (avg.)	8 ms (avg.)	8 ms (avg.)	8 ms (avg.)	6 ms (avg.)	5 ms (avg.)	9 ms (avg.)
	Pixel Pitch	0.294 mm x 0.294 mm	0.270 mm x 0.270 mm	0.3 mm x 0.3 mm	0.3 mm x 0.3 mm	0.3 mm x 0.3 mm	0.363 mm x 0.363 mm	0.4845 mm x 0.4845 mm	0.630 mm x 0.630 mm
	Viewing Angle	R/L 178, U/D 178	R/L 178, U/D 178	R/L 178, U/D 178	R/L 178, U/D 178	R/L 178, U/D 178	R/L 178, U/D 178	R/L 178, U/D 178	R/L 178, U/D 178
	Backlight System	CCFL	CCFL	Edge LED	Edge LED	Edge LED	CCFL	CCFL	Edge LED
Color Depth	8 bit	10 bit	10 bit	10 bit	10 bit	10 bit	10 bit	10 bit	
Display General	Dimension(mm)	423(W) x 351.5(H) x 76.5(D)	580(W) x 386(H) x 95(D)	638(W) x 389(H) x 74.7(D) 81.7(D-TOUCH)	638(W) x 389(H) x 74.7(D)	668(W) x 421(H) x 88.8(D)	795(W) x 485(H) x 100(D)	1024.6(W) x 617.4(H) x 111.1(D)	1293(W) x 777(H) x 86.3(D)
	Dimension(Inch)	16.653(W) x 13.838(H) x 3.011(D)	22.834(W) x 15.196(H) x 3.740(D)	25.118(W) x 15.315(H) x 2.941(D) 3.22(D-TOUCH)	25.12(W) x 15.32(H) x 2.94(D)	26.299(W) x 16.574(H) x 3.496(D)	31.299(W) x 19.094(H) x 3.937(D)	40.338(W) x 24.307(H) x 4.374(D)	50.906(W) x 30.59(H) x 3.398(D)
	Weight (Kg)	7.3Kg	7.5Kg	7.6Kg (8Kg-TOUCH)	7.6 Kg	8.2 Kg	15.8Kg	28Kg	37Kg
	Weight (lbs)	16.09 lbs	16.53 lbs	16.76lbs (17.64lbs-TOUCH)	16.7 lbs	18 lbs	34.8 lbs	61.7 lbs	81.57 lbs
	Mounting	100 x 100 mm, M4	100 x 100 mm, M4	100 x 100 mm, M4 100 x 200 mm, M4	100 x 100 mm, M4 100 x 200 mm, M4	100 x 100 mm, M4	100 x 100 mm, M4 300 x 100 mm, M4 400 x 200 mm, M6	600 x 200 mm, M8 600 x 300 mm, M8 600 x centerline, M8	600 x 400 mm, M8 600 x centerline, M8
	Input Power	DC 12V, 7A Max	DC 24V, 6.25A Max	DC 24V, 6.25A Max	DC 24V, 6.25A Max	DC 24V, 6.25A Max	DC 24V, 7.5A Max	AC 100~230V, 50~50Hz, 3A Max	AC 100~230V, 50~50Hz, 3A Max
	Power Supply	External	External	External	External	External	External	Internal	Internal
	Enclosure Material and Rating	Aluminum - IPX1	Aluminum - IPX1	Aluminum - IPX1	Aluminum - IPX1	Polymer - IPX1	Aluminum - IPX1	Aluminum - IPX1	Aluminum - IPX1
Front Filter	Anti-Reflection Coating	Anti-Reflection Coating	Anti-Reflection Coating	Anti-Reflection Coating	Anti-Reflection Coating	Anti-Reflection Coating	Anti-Reflection Coating	Anti-Reflection Coating	
Display Connectivity	Input	1 x DVI-D 1 1 x VGA (D-sub) 1 x SD/HD/3G-SDI (BNC) 1 x C-Video (BNC) 2 x S-Video (Y/C) (BNC) 1 x Component**	1 x DVI-D 1 1 x DVI-D 2* 1 x VGA (D-sub) 1 x SD/HD/3G-SDI (BNC) 1 x C-Video (BNC) 2 x S-Video (Y/C) (BNC) 1 x Component**	1 x DVI-D 1 1 x DVI-D 2* 1 x VGA (D-sub) 1 x SD/HD/3G-SDI (BNC) 1 x C-Video (BNC) 2 x S-Video (Y/C) (BNC) 1 x Component**	1 x DVI-D 1 1 x DVI-D 2* 1 x VGA (D-sub) 1 x SD/HD/3G-SDI (BNC) 1 x C-Video (BNC) 2 x S-Video (Y/C) (BNC) 1 x Component**	2 x DVI-D 2 x SD/HD/3G-SDI (BNC) 2 x SOG 1 x VGA (D-sub) 1 x C-Video (BNC) 1 x S-Video (DIN) 1 x Component**	1 x DVI-D 1 1 x DVI-D 2* 1 x VGA (D-sub) 1 x SD/HD/3G-SDI (BNC) 1 x C-Video (BNC) 2 x S-Video (Y/C) (BNC) 1 x Component**	1 x DVI-D 1 1 x DVI-D 2* 1 x VGA (D-sub) 1 x SD/HD/3G-SDI (BNC) 1 x C-Video (BNC) 2 x S-Video (Y/C) (BNC) 1 x Component**	1 x DVI-D 1 1 x DVI-D 2* 1 x VGA (D-sub) 1 x SD/HD/3G-SDI (BNC) 1 x C-Video (BNC) 2 x S-Video (Y/C) (BNC) 1 x Component**
	Output	1 x DVI-D 1 x SD/HD/3G-SDI (BNC)	1 x DVI-D 1 x SD/HD/3G-SDI (BNC)	1 x DVI-D 1 x SD/HD/3G-SDI (BNC)	1 x DVI-D 1 x SD/HD/3G-SDI (BNC)	2 x DVI-D 2 x SOG 1 x C-Video (BNC) 1 x S-Video (DIN) 1 x Component**	1 x DVI-D 1 x SD/HD/3G-SDI (BNC)	1 x DVI-D 1 x SD/HD/3G-SDI (BNC)	1 x DVI-D 1 x SD/HD/3G-SDI (BNC)
Display Control	External Control	RS-232C	RS-232C	RS-232C	RS-232C	RS-232C	RS-232C	RS-232C	
	GPIO Port	Swap, PIP / PBP1 / PBP2 Select, Record indicator	Swap, PIP / PBP1 / PBP2 Select, Record indicator	Swap, PIP / PBP1 / PBP2 Select, Record indicator	Swap, PIP / PBP1 / PBP2 Select, Record indicator	Swap, PIP / PBP1 / PBP2 Select, Record indicator	Swap, PIP / PBP1 / PBP2 Select, Record indicator	Swap, PIP / PBP1 / PBP2 Select, Record indicator	Swap, PIP / PBP1 / PBP2 Select, Record indicator
	Sync On Green (SOG)	Yes	Yes	Yes	Yes	Yes	Yes	Yes	
	Hand Remote	NA	NA	NA	NA	NA	Yes	Yes	Yes
Image Control	Layout	Picture-in-Picture, Picture-by-Picture, Pan, Zoom, Freeze	Picture-in-Picture, Picture-by-Picture, Pan, Zoom, Freeze	Picture-in-Picture, Picture-by-Picture, Pan, Zoom, Freeze	Picture-in-Picture, Picture-by-Picture, Pan, Zoom, Freeze	Picture-in-Picture, Picture-by-Picture, Pan, Zoom, Freeze	Picture-in-Picture, Picture-by-Picture, Pan, Zoom, Freeze	Picture-in-Picture, Picture-by-Picture, Pan, Zoom, Freeze	
	Touch Screen	Optional	Optional	Optional	Optional	Optional	Optional	Optional	
Certifications		FDA Class I, UL 60601-1, CAN/CSA-C22.2 No.601.1-M90, FCC Part 15 Class B, MDD Class I, IEC60601-1, EN60601-1-2, CCC & IEC60950-1(FS-L1901D,FS-L2401D,FS-P2601D,FS-P2603D)							

* Optional, Fiber DVI receiver DDL-Rx, DSP-Rx, DSL-Rx detachable ** Component (RGBS, YpBp) (5 x BNC)